

A Novel Approach for Brain Anomaly Detection

Prajeeth Kumar M.J¹, Santhi H²

School of Computer Science and Engineering, VIT, Vellore, Tamil Nadu, India^{1,2}

ABSTRACT: Human organs are very subtle and play a vital part in adapting metabolism in the body. Since the human body has a specific adapting and guiding mechanism, the brain is the social system's best significant individual. Brains operate on the human body's nervous system, and it also governs reflex behavior. When a simple and minimal change in brain structure occurs, malfunction will start. These cases may arise when this abnormality is called the brain tumor, the abnormal growth of the cells. The field where such anomalies may detect in medical image processing. In this paper we will present a new approach for automatically detecting these tumors and defects using MRI technology. Initially, MRI scanning has performed then that tumor's image processing has done. The first step in the image processing is calculating image segmentation using the watershed algorithm. The second step is visualization using the 3D model. The most difficult job is to figure out when and the border of the tumor is found. The picture visualization has specific parameters and lighting to allow stronger and reliable identification of the areas which have been done. The surgeon will perform the operation with confidence after seeing such outcomes..

KEYWORDS: anomaly detection, pre-processing, 3D visualisation, segmentation

I. INTRODUCTION

The human regulation system comprises numerous control and management firms, including the nervous system, the lymphatic system, the circulatory system, and the endocrine system. This system is made up of organs and cell-based organs so that every system's basic unit is a cell. The cell does have its mechanism of replication. If any abnormality occurs in this process, it will affect the entire system. The brain is the system's central unit. It also consists of cells. Brain cells may have periods of replication because the regular growth rate of these cells is then known as an abnormality of the tumor. There are several methods for identifying cancer, but MRI Technology is the most effective. This paper proposes modifying and enhancing the medical images for MRI pictures. The goal of this paper is the detection of any anomaly or tumor with the help of MRI data set images.

The tumor has two segments, using a watershed algorithm that improves visualization as well as tumor illumination that enhances the tumor's probability. Watershed algorithm's main characteristics are intensity and light in an ambient environment. The segmentation part is the part that has illuminated from the MRI image datasets. Watershed Algorithm simplifies the analyzer's segmentation and image representation.

The complexity of algorithm calculation based on estimation, which may have different characteristic densities. So that algorithm with a detailed structure has more accuracy and effectiveness. Using 3 D segmentation, this is a reliable approach to tumor detection and visualization. The watershed algorithm facilitates its 2-D service and the tumor's 3-D image processing. The screening of 2-D has done using simple MATLAB application, but MATLAB has merged with a 3-D slice for 3-D image tumor detection.

The detection method based on the numerous animation images, diagrams, and features. The visualization includes additional sections, such as the transactional section, lateral section, and horizontal sections discovering the tumor's whole geometry structure. It based on analysis and understanding of the requirements of a given tumor. A higher graphical processing unit that is capable of handling the animation, as well as 3 D visualization, is required for detailed specifications. To better visualize the tumor, the optimized image with proper illumination with ambient background has generated after processing..

II. LITERATURE SURVEY

There are numerous algorithms available for image segmentation purposes. Using segmentation is usually the creation of near contours for the medical image. EmmanouilSkounakis et al. [1] explain the practice and classical method of segmentation of medical images. This paper describes the different segmentation steps. In the traditional image processing technique, there is the possibility of noisy images, overlapped images[10]. MeghanaNagori et al.[6] proposed the classic "clustering algorithms that could be up to 86 percent accurate."

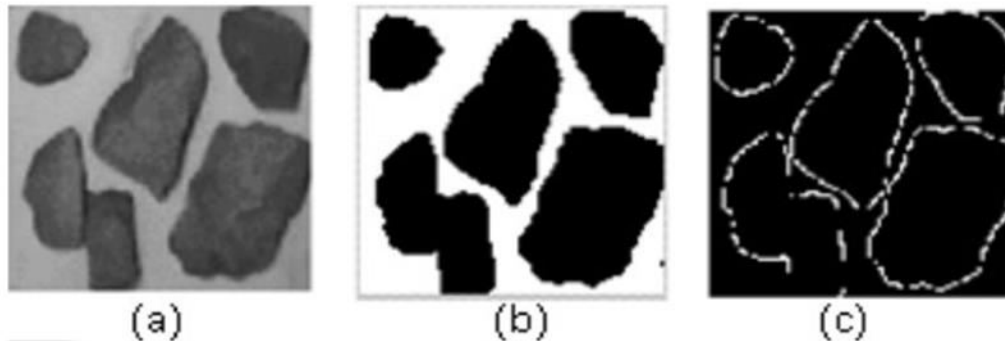


Figure 1: (a) Image with a grey level (b) Threshold produced with the same image (global value =120) (c) Detection of edges by Sobel masks.

P. Rajendran et al.[11] planned rule mining technique for reviewing CT scan brain images. Extract the low-level image options, and then it will become an image of prime quality. Hasan Aydin et al. calculated the chemical analysis of nucleon man for the detection of cancer in[12]. Brain tumors square measure classified into neoplasms, meningioma, and metastasis of low-high-grade interstitial tissue.

Segmentation-based growth detection technique planned for T.Logeswari and et al.[13] will have 2 phases. Film object and noise square measurement within the 1st section removed. The stratified Self Organizing Map (HSOM) applied in the second section.

G Vijay Kumar et al.[14] planned early prediction of brain cancer mainly based on options for texture and the logic of neuron classification. 9 Separate options on the minimum square distance measure used for the detection of brain growth in the given MRI image. The extracted region is a recognized neuro-fuzzy approach to victimization.

AndacHamameci et al.[15] presents a fast and robust instrument for the segmentation of solid brain tumors. The tool assists clinicians and researchers in the design of radiosurgery with user interaction at the bottom.

Sudipta Roy et al.[16] proposes a fully automatic algorithmic rule for asymmetry analysis of tumor victimization detection. The progression of illness indicated through qualitative analysis.

The method of partitioning the image into multiple segments, as planned by S.Beucher Image segmentation. It is an extremely vital step for the image process that results in the analysis of images, the description, and recognition of pictures and mental models. There is an oversized form of techniques which obtained for segmenting images. In this case, the formula employed is a Watershed formula. This system could be a mixture of the threshold, edge, and region-based, primarily morphological watershed remodeling.

This formula is familiar primarily for grayscale images Connected primarily based watershed formula is out and away from the most straightforward implementation of watershed formula that is used here and is ideal for connected elements. It scans the image from the top right to the bottom left and from the right to the left button[4]. Additionally, if a similar label is a gift to neighbors, a comparable value is traced for each pixel. Finally, pixels with the same native minima are connected to create a phase over-segmentation that generally occurs attributable to formula watershed. A gradient map ready from the image intensity has height variations. We tend to obtain lines here that appear as if they were ridges.

III. PROPOSED METHODOLOGY

A methodology with relatively low computation needs and primarily based on block-based techniques with a conceptually straightforward image used to analyze the brain's imaging images. The data flow during this technique is shown explicitly in Figure 2 below.

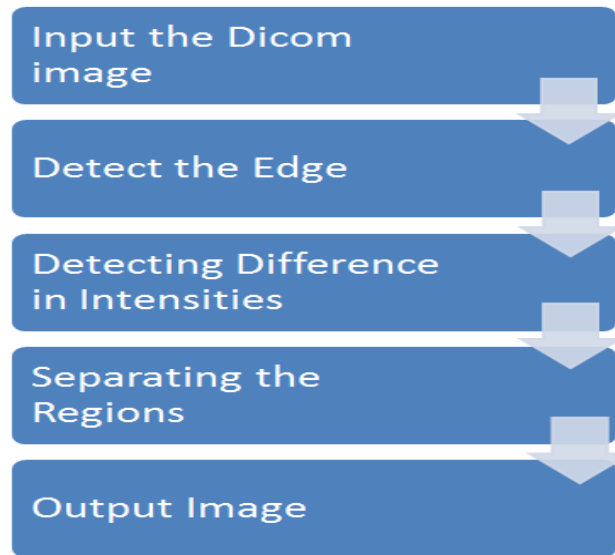


Figure 2: Flow diagram of proposed work

Phases:

Phase 1:

Segmentation:

During this rule, there are two major sections in the unit. First of all, the different parts of the area unit of photographs divided into some regions using a block-based mostly technique. Calculations related to constant area unit disbursed with multi-parameters made within the second section. Multi-parameter here refers to the pixel's perimeters (E), grey values (G), and hence the fundamental distinction (H). Pictures of magnetic resonance imaging are also of 3 types: sagittal, axial, and lei. The number of images created will depend on the resolution of the magnetic resonance imaging magnet movements.

Pre-processing:

Pre-processing involves loading associated magnetic resonance imaging images in the MATLAB atmosphere to remove any gift of noise within an equivalent. Pre-processing suggests all the magnetic resonance imaging loaded. Thus these three images are combined for any process, and noise removal is dole out Weiner filter (linear filter) exploitation. The magnetic resonance imaging images then used for calculating parameters.

Design of Multiparameter :

Bioscience advances make segmentation achievable with the help of parameter calculations. By segmentation, the image split into smaller parts for elaborate analysis. It would touch on examination of each region of anatomy and physiology. Classification in step with multi-parameter values leads to areas that are easier and more measurable. During this multi-parameter technique, three parameters used. The first is the edges (E), the second gray values (G), and finally, the indigenous distinction of the component referred to as 'H.' As acknowledged by Kesha Smith et al.[3] total imaging time is often predictable to 5 minutes, thus producing five to ninety-five frames, depending on the time for attenuation.

Edge (E) :

Edge is the parameter used to detect edges that looks at the index of similarity predefined for an object. The additional criterion of similarity, the less the amount of edges. The number of compressions could also decrease the number of edges.

Gray (G) :

A mapping from data to color was necessary for classical segmentation methods. When different color map sizes are used that time mapping from data to color is required threw the segmentation down. It will become purposeless with the help of the grayparameter[3].

Contrast (H) :

To store the intensity image in MATLAB, a single matrix (I) used. An image within a given range that represents different intensities is known as Intensity Images. In MATLAB, each value in the matrix represents one pixel. These images show in various classes, namely double, unit8, or 16. These images displayed with a color map. Contrast (H) may represent the range of variation of pixels displayed on the screen. The program mainly analyzes the image by differentiating between different portions of the I(x, y) images (entities).

Watershed Segmentation

Watershed rule differentiates completely different parts of the image according to intensity. This method of segmentation is the best suited for police working brain tumors and high-density brain tissues. Watershed segmentation additionally recognized for a small difference in intensity. Alternative strategies such as snake or level set strategies to fail to distinguish the minor variations[9].

Algorithm

- Input MRI image
- Transform it to grayscale
- Put in gradient magnitude
- Spot foreground objects
- Spot background objects
- Calculate watershed transform
- Picturing of the outcome

Phase 2:

3D visualization:

Brain tumor segmentation Region of Interest (ROI) Command: as previously seen, the delineated technique distinguishes regions with entirely different intensities. The most crucial goal of this paper is to detect growth that could be achieved in MATLAB by victimizing ROI (Region of Interest).

Set 3D Victimization Slicer: Growth detection requires a 3D image, but the MRI pictures square measure usually 3D. So before segmentation, the second pictures need to be born-again to the 3D model. It would finish 3D Slicer's assistance. 3D slicer produces a 3D model from the second set of MRIs.

Steps of visualization are as follows:

- i. Dynamic information format: Aa 3D array used to store the image in 3D
- ii. Displaying magnetic resonance imaging images Data: Every magnetic resonance image is displayed, and its axis is scaled accordingly.
- iii. Showing a 2-D Contour Slice: Because the 3D object gift includes a collection of 2nd information slices, it can be called a number. Counterslice also reveals a bit of the dataset's counterpart. For the development of a counterplot of the same size and orientation as the original X-axis shift picture initial. Then limit the dataset axis x and y and ratio.
- iv. 3D Contour Slices display Contour slice used to represent 2nd 3D pictures shown in any orientation. Growing the road dimension offers a proper 3D picture presentation.
- v. Showing Associate Degree Isosurface: Isosurface often used for accurate display of 3D images. It used to reveal details about the gift of information on the inside surface of the isosurface.
- vi. Adding associate degree Isocap to point out a Cutaway Surface: Isocaps can be used to shrewd the details on another patch that has the same value. Wrinkled features can show information within the central section in a very sliced way at the top of the pinnacle.
- vii. Shaping the view: this step completes the setting of the ratio and developing the read. The light, axis, the measure used for aspect square.

IV. RESULT AND ANALYSIS

Watershed Segmentation

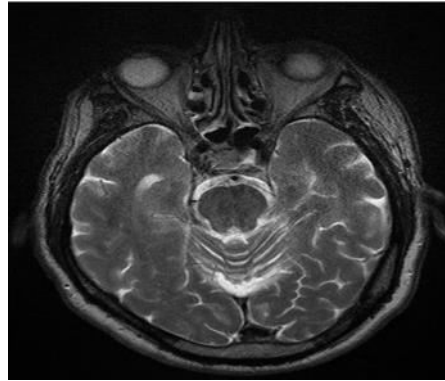


Figure 3: MRI Image(Gray scale)

Figure 4 displays the MRI image, which is grayscale. After applying the grayscaled function on the original image, we can obtain the grayscaled image. The grayscaled picture gives a direct view of the picture of the Dicom.

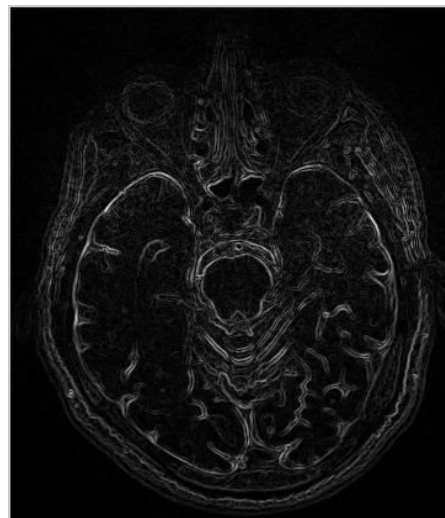


Figure 4: Gradient Magnitude of MRI Image

We provided a gradient function to calculate the gradient magnitude of the MRI image that applied to the grayscaled image. Gray scaled the image that we were calculating in the previous phase. The image Gradient Magnitude shows in Figure 4.



Figure 5: Opening IO of MRI image

The next step opens the IO after calculating the gradient magnitude, which shown in reference figure 5. In that all white light pixels and background image should be black will be shown in a light color.



Figure 6: Thresholded opening-closing threu reconstruction

Figure 6 shows the reconstruction threu the opening and closing threshold, and IO image and output is Threshold opening and closing image in that input. We can directly identify the borders of a Dicom image in that image.

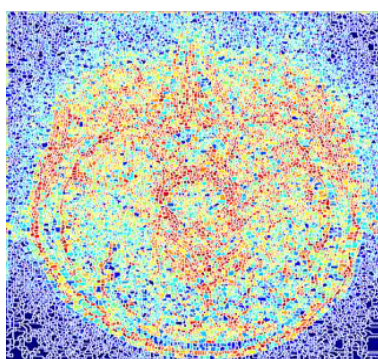


Figure 7: Watershed Transformation

Figure 7 indicates the transition of the wetlands so that each pixel differs according to the picture of the source. The color will be different for the foreground image and background image.

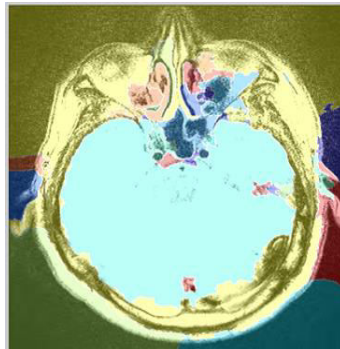


Figure 8: Lrgb superimposed transparently on MRI image

Figure 8 shows the resulting image, which is transparently superimposed on the MRI image by Lrg. If there is some abnormality in the input picture, then the intensity varies. Because of the different energy, the anomaly will come in a different color in the resulting image.

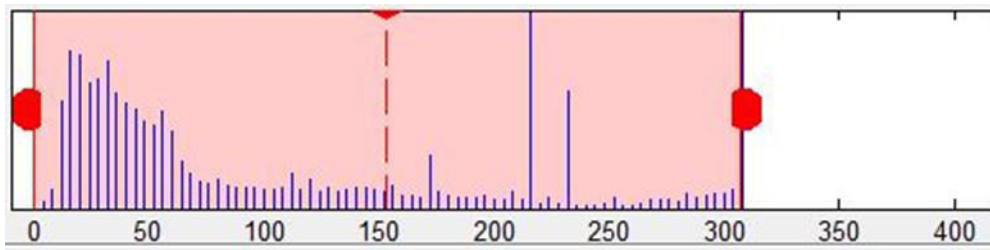


Figure 9: Histogram of watershed analysis.

Figure 9 displays the analysed effect of the transformation picture of the Watershed that studied during the experimental study.

3D visualization

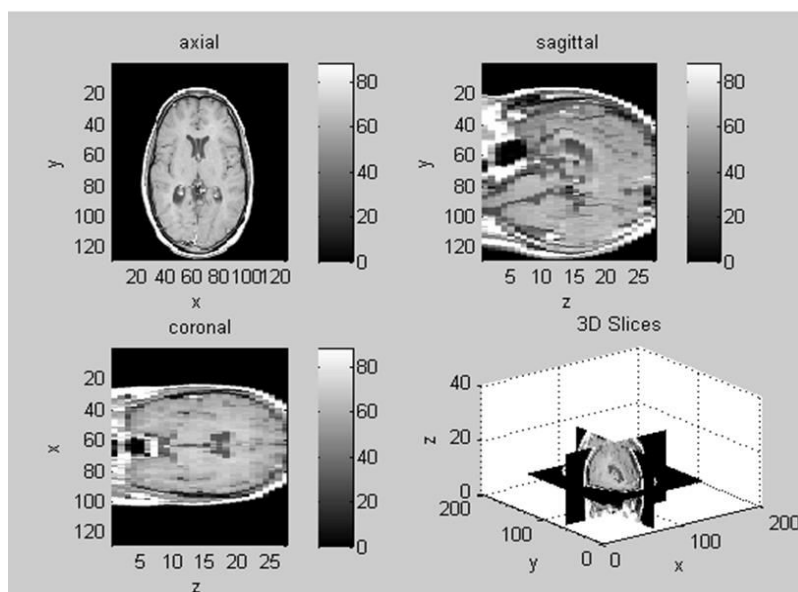


Figure 10.3D Visualized image from 2D images.

The visualization shows in Figure 10. After merging more than one 2D images, we are also able to get the third dimension.

V. CONCLUSION AND FUTURE WORK

The efficiency of the Watershed Segmentation and Neoplasm provided that the area unit parameters are correctly set in the MATLAB atmosphere. This work aims at demonstrating that types of medical imaging aimed at general-purpose segmentation systems are used to segment brain tumors automatically. We aim to take care of segmentation quality to be a lot more actual than manual segmentation and to speed up operational imaging segmentation. That the technique is semi-automatic, is only one drawback. It's a little bit of a significant project involving automated open surgery without any MD support. A comparison of this algorithmic program to another algorithmic program exists for the longer-term function. And there is another possibility that segmentation will be using another algorithmic method.

REFERENCES

- [1] EmmanouilSkounakis, Konstantinos Banitsas, Atta Badii, Stavros Tzoulakis, Emmanuel Maravelakis, and AntoniosKonstantaras. ATD: A Multiplatform for Semiautomatic 3-D Detection of Kidneys and Their Pathology in Real-Time. IEEE TRANSACTIONS ON HUMAN-MACHINE SYSTEMS, VOL. 44, NO. 1, FEBRUARY 2014. PP 146~153.
- [2] Jarvik JG1, Yuen E, Haynor DR, Bradley CM, Fulton-Kehoe D, Smith-Weller T, Wu R, Kliot M, Kraft G, Wang L, Erlich V, Heagerty PJ, Franklin GM "MR nerve imaging in a prospective cohort of patients with suspected carpal tunnel syndrome" Neurology. 2002 Jun 11;58(11):1597-602 PubMed.
- [3] Kesha Smith RT, Robin McCall RT, Lisa Cimino "MRI Imaging Parameters GE and Siemens Scanners" ACRIN 6684 MRI.v09152009 pp 1~7
- [4] Sameer Ruparelia "Implementation of Watershed Based Image Segmentation Algorithm in FPGA" Master Thesis Institute of Parallel and Distributed Systems Department of Parallel Systems Universitätsstraße 38 D-70569 Stuttgart.
- [5] Gustav Andreisek, Doris Burg, Ansgar Studer, and Dominik Weishaupt "Upper extremity peripheral neuropathies: role and impact of MR imaging on patient management" Springer 10.1007/s00330-008-0940-y, European Society of Radiology, 2008.
- [6] MeghanaNagori, ShivajiMulkule, PrafulSonarkar. Detection of Brain Tumor by Mining fMRI Images. International Journal of Advanced Research in Computer and Communication Engineering Vol. 2, Issue 4, January 2013. PP 1718~1720
- [7] DuškaKleut, MiloradJovanovićand prof. drBranimirReljin. 3D Visualisation of MRI images using MATLAB. JOURNAL OF AUTOMATIC CONTROL, UNIVERSITY OF BELGRADE, VOL. 16:1-3, 2006©. PP 1~3
- [8] Bin Chen, John Moreland, Jingyu Zhang. Human brain functional MRI and DTI visualization with virtual reality. AME Publishing Company. Quant Imaging Med Surg 2011. PP 11~16
- [9] Kiruthika. An Implementation of Watershed Based Image Segmentation Algorithm Using FPGA Processor. International Journal of Science and Research (IJSR) ISSN (Online): 2319-7064. PP 399~402
- [10] Dang Ba Khac Trieu and Tsutomu Maruyama "An implementation of a watershed algorithm based on connected components on FPGA" 978-1-4244-2796- /08/25.002008 IEEE Japan,2008.
- [11] P.Rajendran and M.Madheswaran, "An Improved Image Mining Technique For Brain Tumour Classification Using Efficientclassifier", International Journal of Computer Science and Information Security, Vol. 6, No. 3, pp. 107-116, 2009.
- [12] Hasan aydin, nilayaydinoktay, serdarspaholu, elifaltin and bakihekmolu, "The Efficacy and Value of Proton MR Spectroscopy In Evaluating the Brain Tumours", The New Journal of Medicine 2010, pp. 37-42, 2010.
- [13] T. Logeswari and M. Karnan, "An improved implementation of brain tumor detection using segmentation based on soft computing", Journal of Cancer Research and Experimental Oncology, Vol. 2, No. 1 pp. 006-014, March 2010.
- [14] G Vijay Kumar and Dr GV Raju, "Biological Early Brain Cancer Detection Using Artificial Neural Network," International Journal on Computer Science and Engineering, Vol. 02, No. 08, pp. 2721-2725, 2010.
- [15] AndacHamameci, Nadir Kucuk, KutlayKaraman, KayihanEngin, and GozdeUnal, "Tumor-Cut: Segmentation of Brain Tumors on Contrast-Enhanced MR Images for Radiosurgery Applications", IEEE TRANSACTIONS ON MEDICAL IMAGING, Vol. 31, No. 3,pp. 790-804, March 2012.
- [16] Sudipta Roy and Samir K. Bandyopadhyay, "Detection and Quantification of Brain Tumor from MRI of Brain and it's Symmetric Analysis", International Journal of Information and Communication Technology Research, Volume 2 No. 6, pp. 477-483, June 2012.